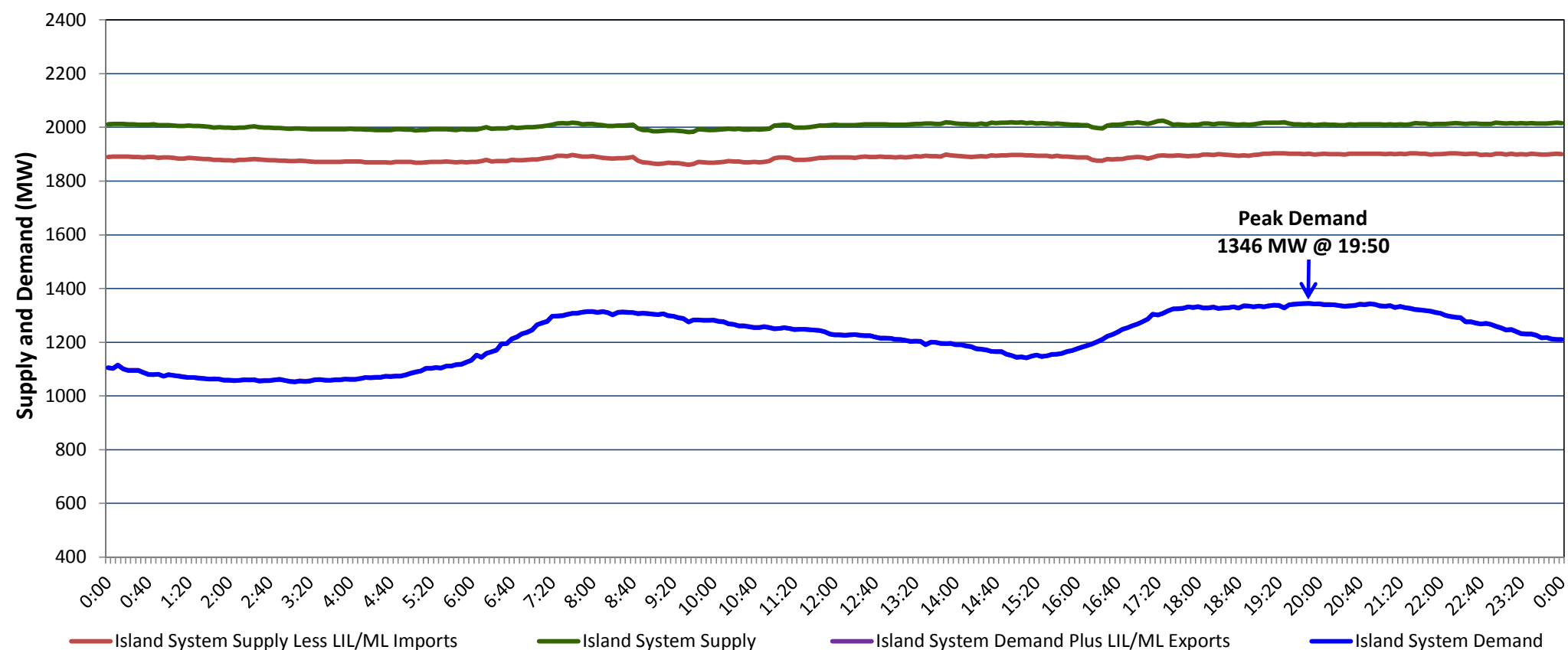


**Newfoundland Labrador Hydro (NLH)
Supply and Demand Status Report Filed Friday, February 01, 2019**

**Section 1
Island Interconnected System Supply, Demand & Exports
Actual 24 Hour System Performance For Thursday, January 31, 2019**



Supply Notes For January 31, 2019

1,2

A As of 2146 hours, January 29, 2019, Holyrood Unit 1 unavailable due to planned outage 165 MW (170 MW).

**Section 2
Island Interconnected Supply and Demand**

Fri, Feb 01, 2019	Island System Outlook ³		Seven-Day Forecast	Temperature (°C)		Island System Daily Peak Demand (MW)	
				Morning	Evening	Forecast	Adjusted ⁷
Available Island System Supply: ⁵	1,985	MW	Friday, February 01, 2019	-6	-7	1,560	1,456
NLH Island Generation: ⁴	1,525	MW	Saturday, February 02, 2019	-7	-6	1,565	1,461
NLH Island Power Purchases: ⁶	175	MW	Sunday, February 03, 2019	-8	-11	1,655	1,550
Other Island Generation:	210	MW	Monday, February 04, 2019	-8	-4	1,585	1,481
ML/LIL Imports:	75	MW	Tuesday, February 05, 2019	-6	-4	1,545	1,441
Current St. John's Temperature & Windchill:	-8 °C	-15 °C	Wednesday, February 06, 2019	-2	0	1,415	1,313
7-Day Island Peak Demand Forecast:	1,655	MW	Thursday, February 07, 2019	-3	-6	1,535	1,431

Supply Notes For February 01, 2019

3

- Notes:
1. Generation outages for running and corrective maintenance are included. These are not unusual for power system operations. They generally do not impact customer supply. The power system operators schedule outages to system equipment whenever possible to coincide with periods when customer demands are low and sufficient supply reserves are available. However, from time to time equipment outages are necessary and reserves may be impacted.
 2. Due to the Island system having no synchronous connections to the larger North American grid, when there is a sudden loss of large generating units there may be a requirement for some customer's load to be interrupted for short periods to bring generation output equal to customer demand. This automatic action of power system protection, referred to as under frequency load shedding (UFLS), is necessary to ensure the integrity and reliability of system equipment. Under frequency events have typically occurred 5 to 8 times per year on the Island Interconnected System and the resultant customer load interruptions are generally less than 30 minutes. With the activation of the Maritime Link frequency controller during the winter of 2018, UFLS events have occurred less frequently.
 3. As of 0800 Hours.
 4. Gross output including station service at Holyrood (24.5 MW) and improved NLH hydraulic output due to water levels (35 MW).
 5. Gross output from all Island sources (including Note 4).
 6. NLH Island Power Purchases include: CBPP Co-Gen, Nalcor Exploits, Rattle Brook, Star Lake, Wind Generation and capacity assistance (when applicable).
 7. Adjusted for curtailable load, market activities and the impact of voltage reduction when applicable.

**Section 3
Island Peak Demand Information
Previous Day Actual Peak and Current Day Forecast Peak**

Thu, Jan 31, 2019	Actual Island Peak Demand ⁸	19:50	1,346 MW
Fri, Feb 01, 2019	Forecast Island Peak Demand		1,560 MW

Notes: 8. Island Demand / LIL / ML Exports (where applicable) is supplied by NLH generation and purchases, plus generation owned and operated by Newfoundland Power and Corner Brook Pulp & Paper (Deer Lake Power, DLP).